



floor or in the inspection laboratory.

Supplied with SB60/10 probe with removable pad: one single probe can be used to measure roughness or undulation!
 RUGOSURF 90G can measure a components with a height of up to 90 mm, thanks to a vertical positioning screw without any additional accessory!
 With the PROFILE SET 2 mm (06960100) RUGOSURF 90G becomes a profile measurement instrument with a width of 2000 μm measuring in the Z axis

Direct display of all measured values and computed profiles.



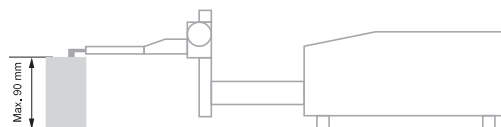
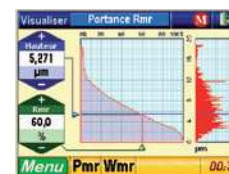
Z = 1000 μm (0.039 in)
 X = up to 50 mm

without contact skid (measure of undulation).

Unique in its category, this instrument can also do profile measurement (Z = 2 mm) if used with PROFILE SET 2 mm (optional).



Roughness profile





portable table roughness tester
 $Z = \pm 500 \mu\text{m} (\pm 0.0197 \text{ in})$



Measuring span, μm



Indication span, μm



- Profil-W, Profil-R, Profil-P, Bearing area curve



(R = μm ; angle $^\circ$)



Call: RUCOOURF 100 (L RUCOOURF 100) ()

Roughness standard Ra: 0,1 µm (1 µin)

Roughness standard Ra: 0,2 µm (8 µin)

Roughness standard Ra: 0,5 µm (20 µin)

PROFILE CET 2 mm for profile measurement

SB60/10 2µm probe for RUCOOURF 100

as SB60/10 but R = 2 µm

SB20P probe for RUCOOURF 100

SB50P probe for RUCOOURF 100

SB420P probe for RUCOOURF 100

SB00 D2 L60 probe, L = 60 mm for RUCOOURF 100

Roughness standard Ra: 0,25 µm (10 µin)



N Roughness



Z = 0,1 µm
X = 0,4 to 4,0 µm



PROFILE SET 2 mm for profile measurement (compatible with RUGOSURF 90G).

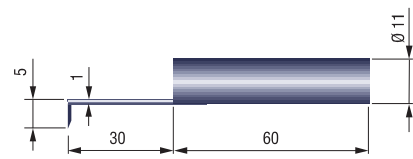
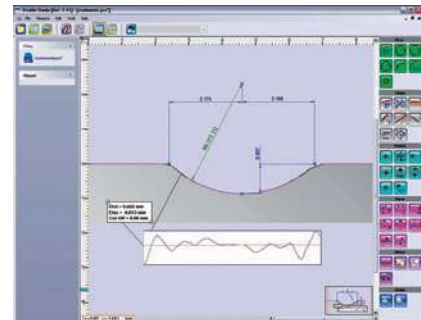
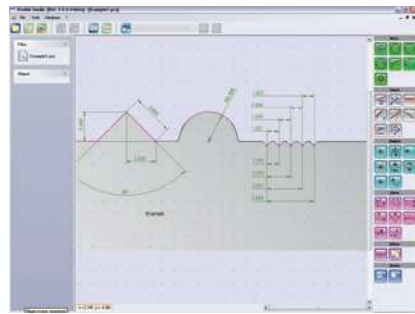
software dedicated for profile measurement STUDIO PROFILE, the RUGOSURF 90G roughness gauge converts into a profile-measuring tool.

lengths, radii and angles of parts which are sometimes impossible to verify by other means.

Measurements can be inserted into the measured profile after defining geometric elements (point, line, arc or intersection between two lines, for example). The tolerance values allow verification of the results at a glance. Rotation and symmetry of the profile also allows its orientation.

It is a part of identical geometry. This saves valuable time and facilitates operations as important manual measurements can be replicated automatically.

A standard profile with a measurement report is included in the PROFILE SET 2 mm set.



No

=

for profile measurement with RUGOSURF 90G

Cable RUGOSURF 10G and RUGOSURF 90G to PC (connector v3)

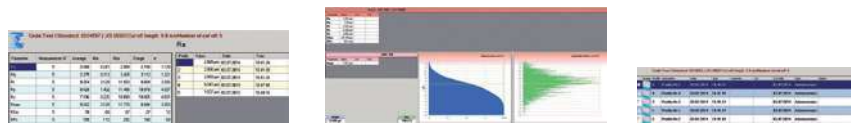
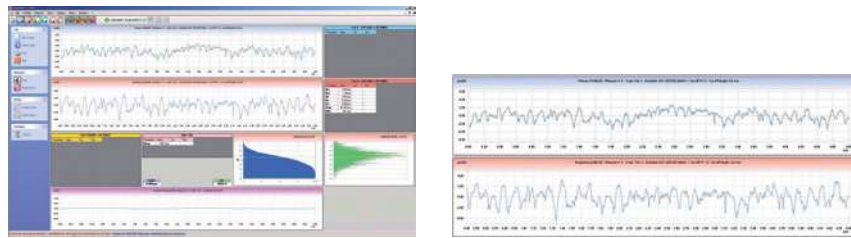
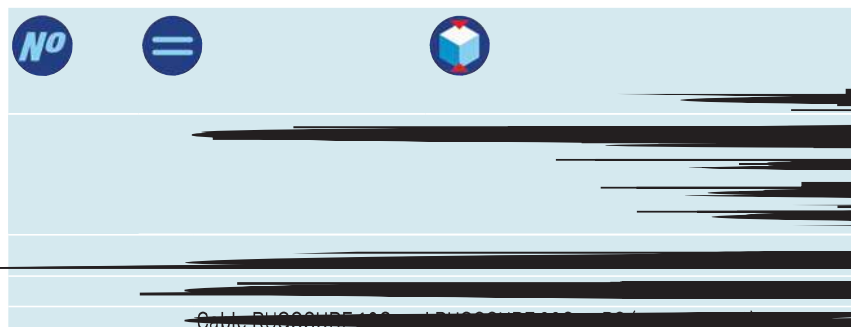


Enables the user to import stored measurement values from the device to the computer for the management of a database.

Optimal and detailed visualization of the results: parameters, profiles (R roughness and P primary profile) or a combination of both.

instrument.

profiles as coordinates

A navigation bar with three circular icons: a blue circle with 'No', a blue circle with an equals sign, and a blue circle with a white cube. Below the icons, there is a large, light blue rectangular area with some faint, illegible text.

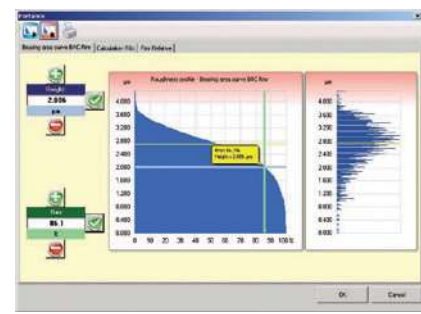
Software for RUGOSURF 90G.

Enables the import of stored measurement data from the device to the computer, for processing in a database.

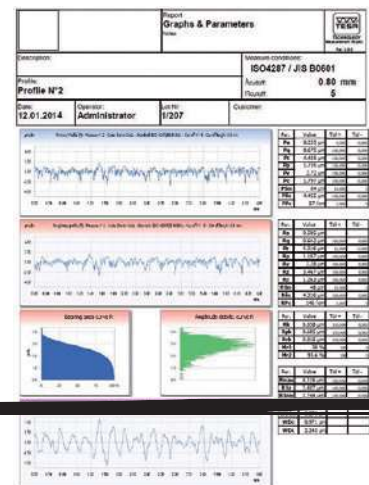
Optimal and detailed visualization of the results: parameters, profiles (W undulation, P primary profile and R roughness) or the three.

Calculation of roughness parameters including VDA parameters.

profiles as coordinates
measuring report in format **.xls .pdf .doc .rpt** (Crystal Report) or **.rft** (Rich Text



Parameter	Measurements N°	Average	Min	Max	Range	U
Ra	3	2.423	0.826	4.114	3.289	0.200
Rq	3	2.143	0.842	3.577	2.735	0.200
Rz	3	6.995	3.164	11.954	7.820	0.200
Rt	3	2.909	1.937	4.126	2.939	1.200
Rv	3	6.186	2.299	8.891	6.611	0.200
Rp	3	8.197	3.467	11.117	7.666	0.250
Rs	3	6.025	1.263	10.170	9.014	0.300
RSm	3	0	0	0	0	0
RSt	3	6.965	4.214	11.954	7.520	0.200
RSp	3	0	0	0	0	0
Pv	3	2.170	0.826	3.245	2.407	1.100
Pa	3	2.482	0.826	3.622	2.822	1.200
Pv	3	6.657	4.458	10.352	7.967	0.620
Pq	3	2.090	1.755	3.624	1.869	1.670
Pv	3	6.782	2.750	7.320	4.568	2.170
Pz	3	7.620	1.797	10.200	8.200	0.750
PSt	3	0	0	0	0	0
PSc	3	0.957	0.450	1.022	0.607	0.620
PPv	3	0	0	0	0	0
Rt1	1	6.338	0.338	6.338	6.300	0.000
Rt4	1	6.685	0.000	6.685	6.685	0.000
Rt8	1	6.975	0.075	6.975	6.900	0.000
Rt1	1	6.306	0.306	6.306	6.300	0.000
Rt2	1	6.306	0.306	6.306	6.300	0.000
Rtmax	0	10.301	4.214	12.497	8.375	0.700
Rt3	3	7.367	2.407	10.452	8.365	0.540
Rt3m	3	7.887	2.744	11.200	8.456	0.670
WDCm	0	6.886	3.000	6.000	6.300	0.000
WDC	0	6.886	3.000	6.000	6.300	0.000
WDP	0	6.886	3.000	6.000	6.300	0.000



Par VDA 2007			
Parameter	Value	Tol-	Tol+
WDSm	0.273 µm		
WDC	0.971 µm		
WDP	2.243 µm		



User instructions (included on the installation CD)
USB connection cable to the PC for RUGOSURF 10G and



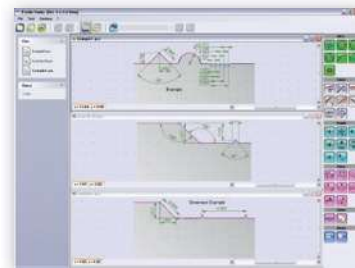
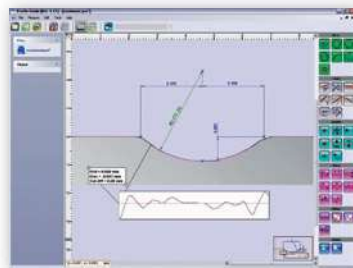
For profile measurement using the RUGOSURF 90G.

Measurement programme creation that can be saved for the same measurements on a batch of identical parts from the same set or for subsequent batch reference profile for a measurement of a batch of the same part.

Measurement instructions and help assistance for calibration controlled from the

Database search with filters (date, operator, batch, etc.).

Detailed visualization of the measured profile and geometric construction tools



No

=



Cable RUGOSURF 10G and RUGOSURF 90G to PC (connector v3)